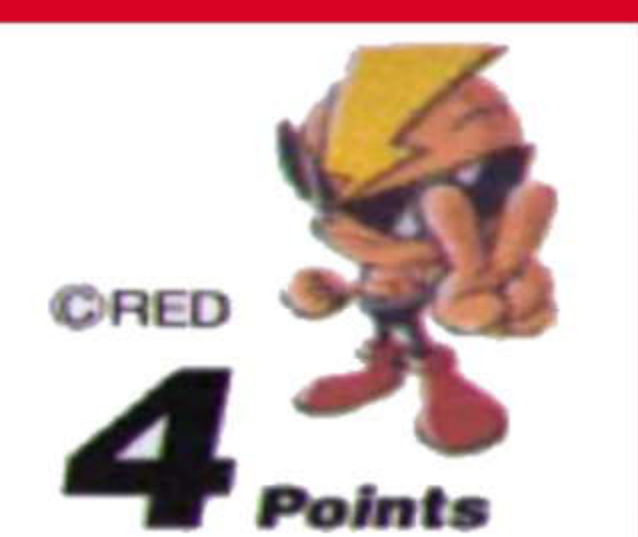


Have you tried
these other TurboGrafx-CD™
game discs?

- Castlevania: Rondo of Blood™
- Snatcher™
- Where in the World is Carmen Sandiego?™
- Far East of Eden: Manjimaru™



Distributed by

Falcom®

COMPACT
disc

TURBO
16
GRAFX

“TurboGrafx”, “TurboDuo”,
“TurboPad”, and “TurboTap”
are trademarks of NEC
Technologies, Inc.

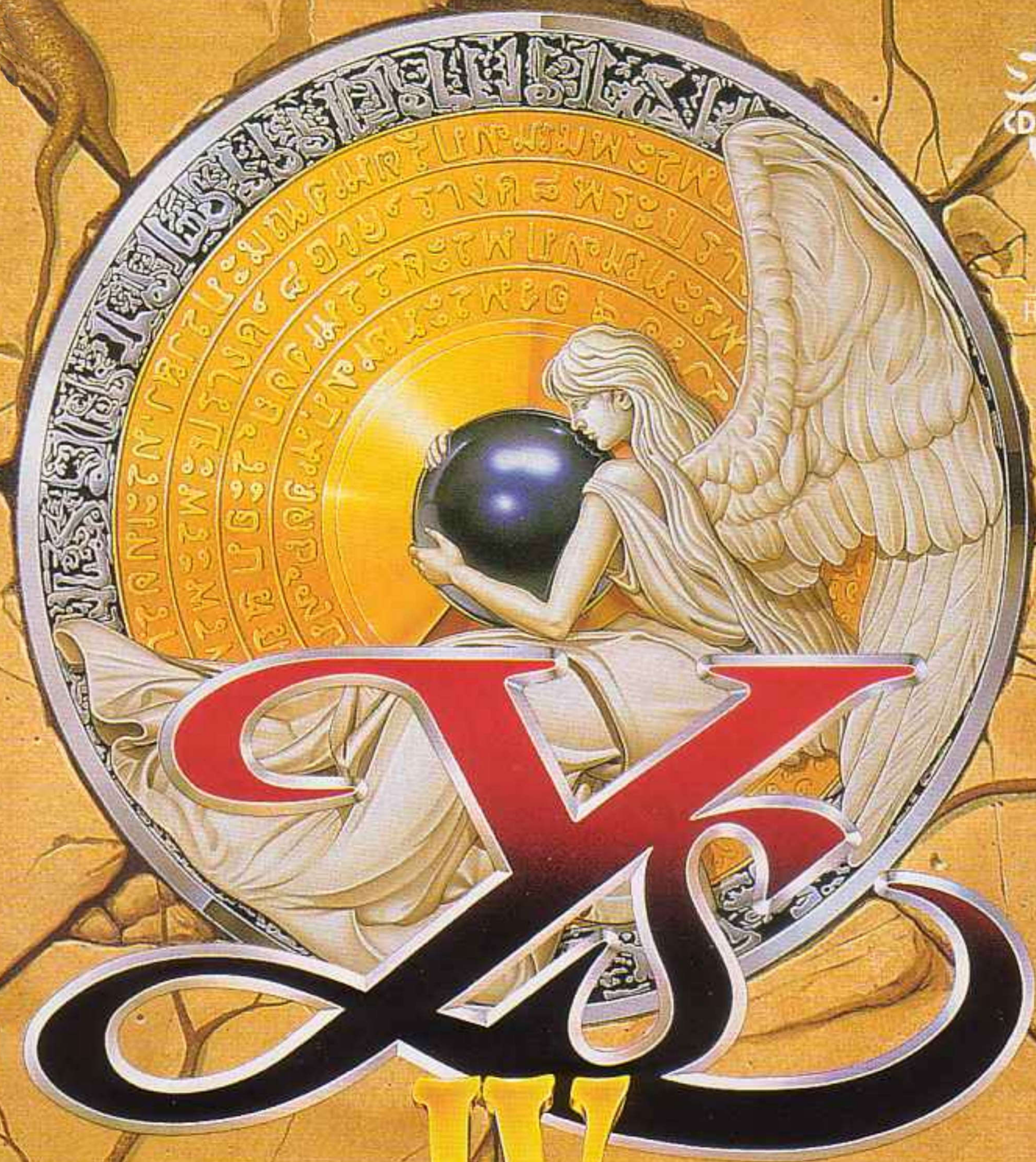
Ys is a trademark
of Falcom.

© 1987 1993 Falcom
All rights reserved

Printed in U.S.A.
TGXCD3051

SUPER
CD-ROM² SYSTEM

ISS
Roland Sound Space



The Dawn of Ys

Once upon a time, life forms of a different species more advanced than humans,
lived on this planet. They built their capital city somewhere in the world.
The unimaginably beautiful city was the crystallization of their very advanced culture.

このたびは、「ハードソン」のゲームソフトをお買い上げいただき、誠にありがとうございました。ご使用の前に、この「取扱説明書」をよくお読みになり、正しくご使用ください。

●Super CD-ROM²ソフト使用上の注意

- ①PCエンジン、CD-ROM²などハードの接続及び動作方法に関しましては、各機器に付属の「取扱説明書」を必ずご熟読の上ご使用ください。
- ②CD-ROMディスクには表と裏があります。必ずゲームタイトルが印刷されている面を上にしてセッティングしてください。
- ③ゲームプレイ中にCD-ROM²プレイヤーの蓋を開けたり、CD-ROM²本体に振動を与えないでください。正常なプレイが出来なかったり、本体やソフトを痛める場合があります。
- ④CD-ROM²ディスクは音楽用CDプレイヤーでは、使用しないでください。コンピュータ用データがオーディオ機器に悪影響を及ぼす場合があります。

●健康に関する注意

本機を使用される場合は、極力疲れた状態で使用することは避け、テレビ画面からできるだけ離れてゲームをしてください。長時間ゲームを続ける場合は健康のため、1時間ごとに10～15分の休みをとってください。

また、ごく稀に、強い光の刺激や、光の点滅を受けている時に、一時的に筋肉のけいれんや、意図の喪失等の症状が現れるという例が報告されています。こうした症状を経験したことのある人は、テレビゲームをする前に必ず医師に相談してください。また、テレビゲームをしていて、このような症状が起きた場合には、ゲームを止め、医師に相談してください。

このCD-ROM²ディスクは、「**SUPER CD-ROM²**」専用ソフトです。従来の「CD-ROM² SYSTEM」では動作いたしませんのでご注意ください。動作させるためには、「**SUPER SYSTEM CARD**」が必要です。



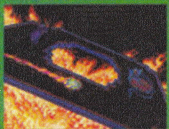
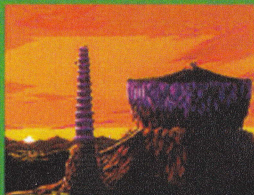
Ys IV contents

●GAME STORY～ゲームストーリー～	4
●CHARACTERS～キャラクター紹介～	6
●HOW TO PLAY～遊び方～	8
●COMMAND～コマンド紹介～	10
●ITEMS～アイテム紹介～	12
●EQUIPMENTS～装備品紹介～	13
●MAGICS～魔法紹介～	13
●NEW SYSTEMS～新システム～	14

The Dawn of Ys

Long upon a time, life forms of different species more advanced than humans, lived on this planet. They built their capital city somewhere in the world, the amazingly beautiful city was the crystallization of their very advanced culture.

ロゴイラスト／柏崎義明

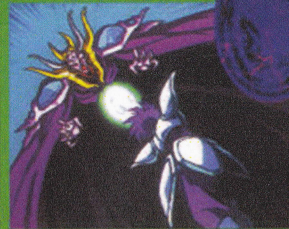
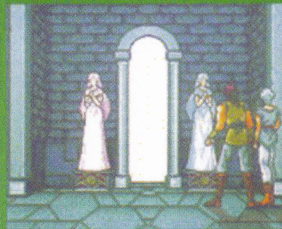


Ages ago.....
There existed a land called "Ys".
A land of freedom, guided by wisdom of six priests,
where the people prospered, blessed by the gods.
But, tragedy befell.....
"Evil" manifested upon the peaceful land.
To flee this plague Ys then disappeared
to the heavens, leaving their legacy
inscribed within the six books of Ys
and the mysterious metal, Cleria.....

----- 800 years pass.....
"Evil" again ravaged the land,
in search of the six lost tomes.
---- The adventurer who traveled to Esteria,

Adol Christin,
embarked on a quest
to recover the books from the "Evil"
and discover the secret of Ys above.
After a long, perilous journey,
Adol gathered the six volumes from afar,
returning them to holy ground, and to all of Esteria,
as well as Ys, finally brought peace.....

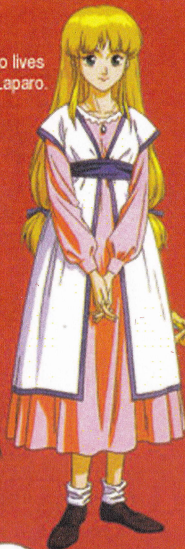
----- Two years hence.....
Adol now travels to the continent in search of
adventure. He shall venture into the green depths
of the wild forest, to save a land,
unbeknownst to him, called Selceta, from peril.....
And, he will unlock the mystery of the dawn of Ys.



キャラクター Characters

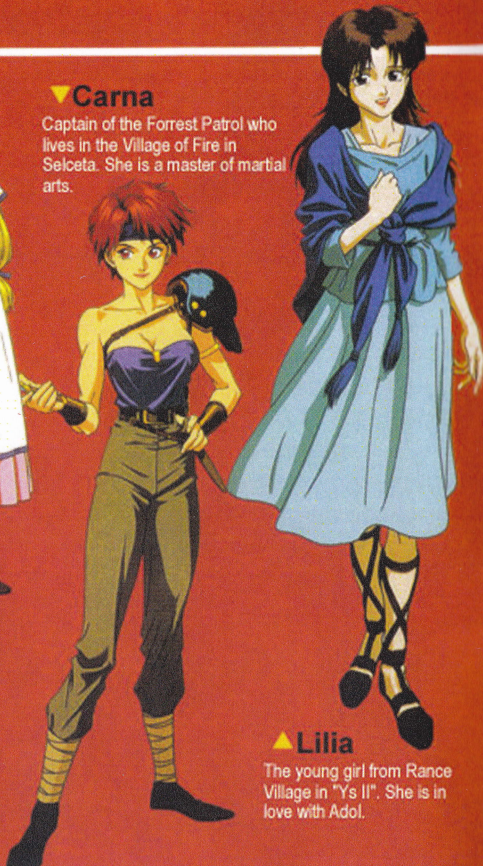
▶ Leeza

A young, gentle girl who lives in the Earth Village of Laparo.



▼ Carna

Captain of the Forrest Patrol who lives in the Village of Fire in Selceta. She is a master of martial arts.



▼ Adol

The hero of the Ys series, the adventurer, Adol Christin.



▲ Lilia

The young girl from Rance Village in "Ys II". She is in love with Adol.



Bammy

A selfish, psychopathic sorceress of the Dark Ones.

Gruda

Cold blooded leader of the Dark Ones, possessing intelligence, cunning and unsurpassed skill in combat.

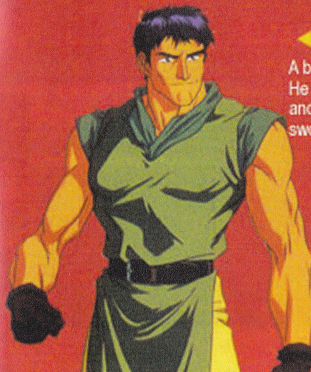
Gadeis

Member of the Dark Ones and menace to Selceta. Destruction and bloodshed are his motto.



▶ Dogi

A bandit from Esteria. He possesses great strength, and excels in both swordsmanship and fighting.



▶ Eldeil

Rumored to be the last of the legendary Race of the Winged.

How to play

Using the Game Pad

Directional Pad
For controlling Adol and selecting menu items.

1 Button
Use to confirm commands and use magic.

RUN Button
Press to use an item.

1 Button
Cancels commands, also opens up the Command Window.

Starting the Game

Correctly insert the CD-ROM into your game unit and press the RUN Button. A title screen will appear, followed by a demo; press RUN again. Then, select between the two options, BEGINNING or CONTINUE, and press Button 1. If this is your first game, please select BEGINNING.



SAVE and LOAD

During the game, if you perform a SAVE within the Command Window, you may preserve your current status. There are up to 15 files available for saving, so save often! If you wish to resume gameplay from a saved file, please use the LOAD command.



Understanding the Display

The Ys game display is pictured right (screen shot shown). Game play takes place within the framed area at the top of the screen. At the bottom of the screen are numbers and a gauge indicating Adol's status; during combat, the gauge at the very bottom reflects the enemy's hit points.



Progress

Conversation

To talk with people in towns, use the Direction Button to have Adol touch the person. A conversation will then begin.



Using Items

To use items that you have purchased or found, first select ITEM within the Command Window. Then, close the window and press RUN button to activate that item.



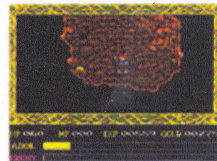
Combat

You can fight monsters wandering in dungeons or in the field by touching them. Strong weapons and armor are the key to victory.



Treasure Chests

Touch the treasure chests that you may find in dungeons or towns. You can claim their contents when they open.

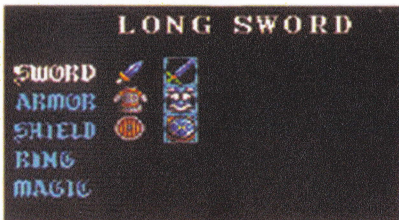


The Commands

During the game, pressing Button II will open the Command Window. Use this window when you wish to **SAVE** or **LOAD** games, or choose weapons or items. You may also change the game speed and find out about Adol's status here as well.

EQUIPMENT

Here you will see a display of the items Adol can equip. In addition to weapons and armor, you can also select rings and magic. Selection is performed by moving your cursor using the Direction Pad. Boxed items will become equipped. Choose your equipment to suit your needs.



▲ Top to bottom: weapons, armor, rings and magic.



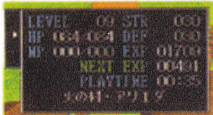
ITEM

The item window allows you to select an item for use. To use the chosen item during the game, press the RUN button.



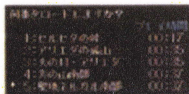
STATUS

This command lets you view Adol's condition in detail. Information such as level, experience points, health, strength, and defense ability are shown.



LOAD

The **LOAD** command allows you to resume a game from a saved file. Highlight the desired file and press Button I.



▲ The **LOAD** command appears as shown.

SAVE

Use the **SAVE** command to preserve your current adventure. It is recommended that you save often during play.



▲ You may save up to 15 files.

OPTION

This file allows you to change parameters that do not directly affect the game story line such as the manner in which the experience points are displayed. You can change speed and message settings to your liking.



▲ In the **OPTION** window, you can change the following settings.

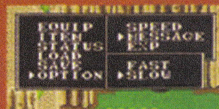
SPEED

The **SPEED** setting changes Adol's walking speed. **FAST** will increase his speed, while **SLOW** will decrease his speed.



MESSAGE

You can change the speed at which messages are displayed. **FAST** will display text faster, and **SLOW**, slower. Try talking to some characters in the game to find a comfortable setting.



EXP

You can select between displaying the total number of experience points accumulated so far or the number of experience points necessary to attain the next level.



Healing Herb



Using the herb will fully restore your health. They may be purchased at item shops of hospitals, and may even be found in some treasure chests.

A Shard Of Time



Freezes all monsters on the screen. However, it is ineffective against boss characters.

The Flute Of Wind



A whimsical flute given to Adol by Carna. By playing it, you can call a pigeon that brings messages and items.

Power Ring



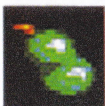
When equipped, allows you to inflict twice the amount of damage. It cannot be purchased.

Ring Of Roda



This ring will restore your magic points, albeit very slowly.

Roda Seed



The Roda Seed will completely restore your magic points. They can be purchased at item shops.

Amulet



Inflicts damage to all visible monsters on the screen. It does not affect boss characters.

Pick



This tool can demolish partly damaged walls. You cannot buy it in any store.

Shield Ring



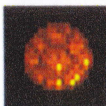
A ring that causes all damaged suffered to be reduced in half, it is a priceless item.

Magic Ring



Equipping this ring will increase your ability to inflict damage with magic.

Rune Seed



A mysterious seed that produces various effects. The effect is randomly chosen from eight possibilities.

Elixir



Restores both health and magic points completely when at the brink of death. It is used automatically and does not have to be equipped.

Treasure Chest Key



You will find this key at some point in the game. There are treasure chests that will not open without this key.

Heal Ring



By equipping this ring, you can restore your health, even in dungeons.

Timer Ring



The Timer Ring causes the monsters' movements to become slower, allowing Adol to maneuver more comfortably.

PUGIO



Standard fare weapon used by the Roman Army. Its power is rather weak.

LONG SWORD



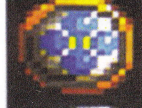
A large, powerful blade. It is forged from ore mined near the Village of Fire.

PALMA



A light-weight shield you obtain during the early part of the game. This shield is not too effective.

BUCKLER



A strong, round shield, made from the same material as the Long Sword.

CHAIN MAIL



An armor used early in the game, it gives little protection.

PLATEMAIL



Constructed again of the same ore, it provides coverage from the waist up. The armor serves as an excellent defense.

魔法 Magics

Fire



An offensive magic spell that shoots forward a ball of fire. It is highly effective against monsters of ice.

Alter



This spell transforms you into a sacred animal, allowing you to communicate with monsters and swim.

Warp



Provides a means of instant travel to designated spots. Destinations include towns and villages.

Seeker



The seeker reveals hidden passages and invisible creatures.

Freeze



A chilling spell that freezes your opponents. Frozen enemies can be defeated with a single blow.

Shield



Repels enemy attack with an aura of light. Adol becomes invincible as long as he has magic points.

Note:

- ❖ You cannot use offensive spells in towns or villages.
- ❖ In certain areas you may not be able to use the Warp spell or call up the Command Window.
- ❖ If your magic points are depleted while swimming with the Alter spell, Adol will drown and will not be able to move. If this happens, unequip the spell, restore your magic points using magic or rings, and transform again using the Alter spell.

The Messenger Pigeon System

"Ys IV" incorporates useful systems not present in earlier games. By using the "Flute of Wind" that you obtain in the middle stages of the game, you can send for messages and potion ingredients via a messenger pigeon.

Note that you may not be able to call the pigeon in certain areas.



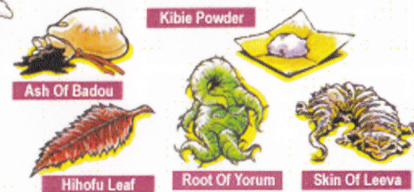
- ▶ When you call the pigeon, it will land nearby, you may have to search and chase after the bird.

Hints For Battling Boss Characters

- The Command Window is unavailable while fighting boss characters. You may still use the currently equipped item by pressing the RUN button. Also, since there are some bosses that prevent escape, you may wish to SAVE your game beforehand.
- Among the numerous bosses, there are some that are unaffected by magical attacks and some by conventional attacks. You will have

The Item Concoction System

By mixing certain of the five basic sacred elements, you can concoct one of seven potions with special powers. You must choose two among the five elements for the alchemist Banjo to mix. The potions effects, and their necessary components, are for you to discover.



- ▶ The boss characters' movements follow a pattern. Study them carefully to plan a strategy.



to discover their weaknesses through trial and error.

- Note that certain items that may work against normal monsters may not work against boss characters.

CD-ROMディスク●保管上の注意

COMPACT disc

<p>汚さないで!</p>	<p>●信号読み取り面(レーベル面の反対側の光った面)を汚さないように注意してください。汚れた場合は、やわらかい布で、中心部から外周部に向かって放射状に軽く拭きとってください。</p>	<p>汚れた時は、やわらかい布でふいてね!</p>
<p>キズには弱いんだ!</p>	<p>●CD-ROMディスクにキズをつけないようにしてください。ケースからの出し入れの際は、こすりキズをつけないよう、特に注意してください。</p>	<p>やさしく、出し入れ!</p>
<p>文字を書かないでね!</p>	<p>●レーベル面に、鉛筆やボールペンなどで文字を書いたり、シール等を貼らないでください。読み取り面にキズをつける恐れがあります。CD-ROMディスクを曲げたり、センター孔を大きくしないでください。</p>	<p>孔を大きくしないで!</p>
<p>いつまでも大切にね!</p>	<p>●プレイ後は元のケースに入れて保管してください。また、CD-ROMディスクは、高温、高湿の場所には保管しないでください。</p>	<p>温度、湿度にも注意して!</p>

★このディスクを無断で複製すること、及び賣買業に使用することを禁じます。

TurboGrafx™-CD Game Disc 90-Day Limited Warranty

Turbo Technologies, Inc. ("TTI") warrants to the original consumer purchaser that this product shall be free from defects in the material and workmanship under the folling terms:

HOW LONG IS THE WARRANTY

This product is warranted for 90 days from the date of the first consumer purchase.

WHO IS PROTECTED

This warranty may be enforced only by the first consumer purchaser. You should save your proof of purchase, and be prepared to present it in case of a warranty claim.

WHAT IS COVERED

Except as specified below, this warranty covers all defects in material or workmanship in this product. The following are not covered by the warranty:

- Any product that is not distributed in the U.S.A. by TTI, or that is not purchased in the U.S.A. from an authorized TTI dealer, or that is sent for warranty service from outside the U.S.A.
- Damage, deterioration or malfunction resultings from:
 - accident, negligence misuse, abuse, neglect, impact, fire, liquid, lightning or other acts of nature, commercial or industrial use, product modification or tampering, failure to follow instructions supplied with the product;
 - repair or attempted repair by anyone not authorized by TTI;
 - any shipment of the product (clamins must be submitted to the carrier);
 - removal or installation of the product; and
 - any other cause that does not relate to a fect in material or workmanship
- Any product on which the TTI serial number has been altered, defected, or removed.

HOW TO OBTAIN WARRANTY SERVICE

For warranty information, call 1-800-366-0136 Monday-Friday 8:00 A.M. to 7:00 P.M. Central Time.

LIMITATION OF IMPLIED WARRANTIES

ANY APPLICABLE IMPLIED WARRANTIES, INCLUDING WARRANTIES OF MERCHANTABILITY AND FITNESS FOR A PARTICULAR PURPOSE, ARE LIMITED IN DURATION TO THE LENGTH OF THIS WARRANTY, AND ARE SUBJECT TO ALL CONDITIONS HEREIN.

EXCLUSION OF DAMAGES

TTI'S LIABILITY FOR ANY PRODUCT IS LIMITED TO THE REPAIR OR REPLACEMENT OF THE PRODUCT AT OUR OPTION. TTI SHALL NOT BE LIABLE FOR:

- Damage to other property caused by this product damages based upon inconvenience, loss of use of the product, loss of time, commercial loss; or
- Any other damages, whether incidental, consequential or otherwise.

SOME STATES DO NOT ALLOW LIMITATIONS ON HOW LONG AN IMPLIED WARRANTY LASTS AND/OR DO NOT ALLOW THE EXCLUSION OR LIMITATION OF INCIDENTAL OR CONSEQUENTIAL DAMAGES, SO THE ABOVE LIMITATION AND EXCLUSIONS MAY NOT APPLY TO YOU.

HOW STATE LAW RELATES TO THE WARRANTY

This warranty gives you specific legal rights, and you may also have other rights which vary from state to state.

Turbo Technologies, Inc.
6701 Center Drive West, Suite 500
Los Angeles, CA 90045

THANK YOU !

...for Buying this Advanced TurboGrafx™-CD Game.



Before using your new game disc, please read this instruction manual carefully. Familiarize yourself with the proper use of your TurboGrafx-CD unit and TurboDuo™, precautions concerning their use and the proper use of this CD game. Always operate your TurboGrafx-16 SuperSystem and this CD game according to instructions. Please keep this manual in a safe place for future reference.

© 1993 Hudson Soft
© 1993 Falcom

TurboGrafx™-CD Player
TurboDuo™

WARNINGS

- This is a precision device and should not be used or stored under conditions of excessive temperature of humidity.
- Do not use this CD game with ordinary CD players. The computer data may damage your audio equipment. In addition, prolonged use of this disc with headphones in a "regular" CD player could cause hearing impairment.
- Never open the CD player's cover while the CD is spinning. This may damage both the disc and the system.
- Never pull the System Card out while the TurboGrafx-16 switch is in the "on" position, as this may damage both the SuperSystem and the CD Interface Unit.
- Do not wipe your Entertainment SuperSystem, TurboGrafx-CD player or TurboGrafx-CD with volatile liquids such as paint thinner or benzene.
- Read this instruction book carefully and keep it in a safe place for future reference.

TurboGrafx-CDs are made especially for use with the TurboGrafx-16 Entertainment SuperSystem, TurboGrafxCD player and TurboDuo™. They will not operate on other systems.

Any duplication of this software is strictly prohibited.